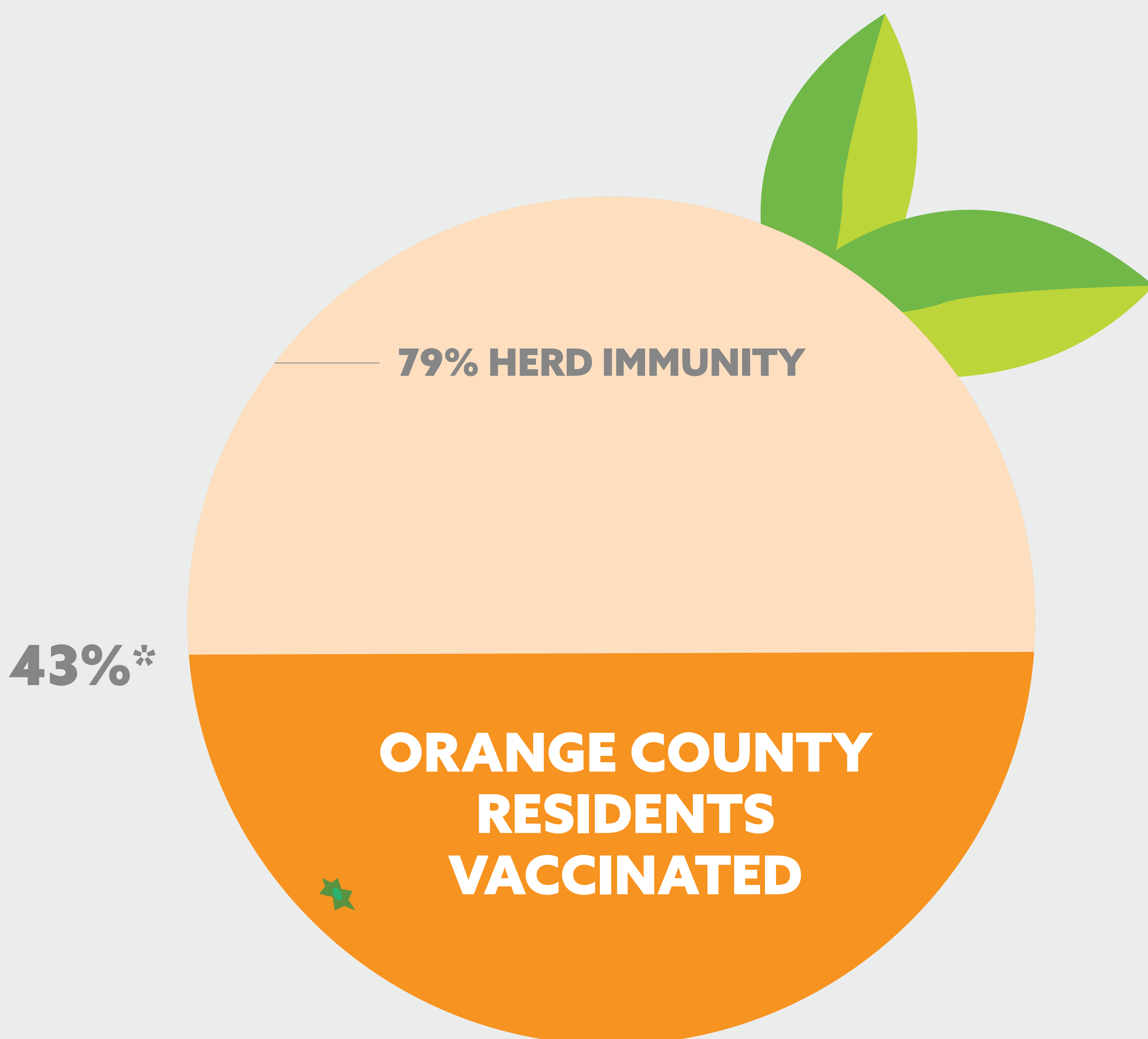


FACE COVERING EXECUTIVE ORDER

PHASE 1

Effective immediately

- Reduce physical distance from 6 to 3 feet in all settings.
- Fully vaccinated individuals should follow CDC guidelines for wearing facial coverings.



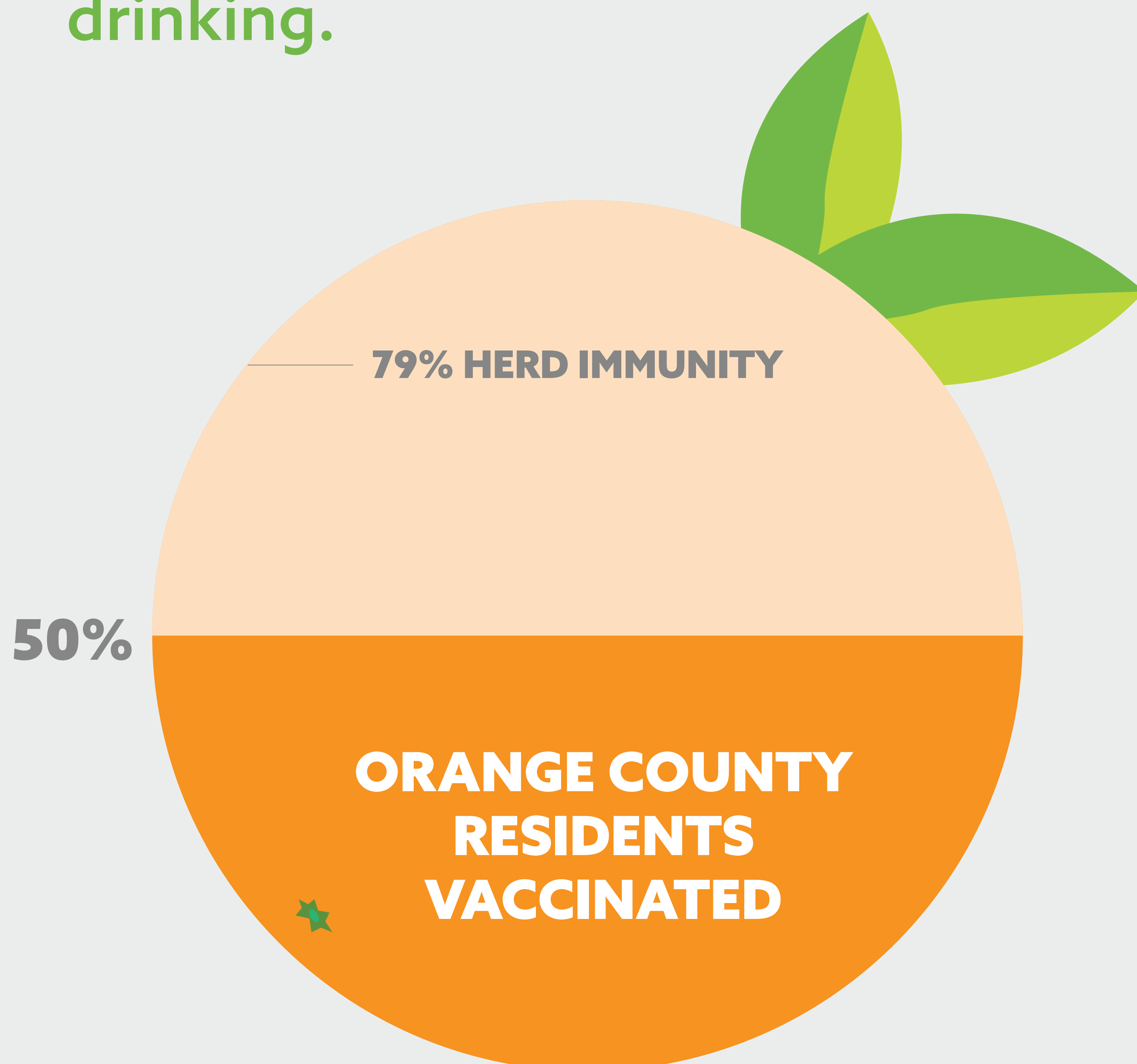
* Percentage of Orange County residents who have received at least one dose of the COVID-19 vaccine.

FACE COVERING EXECUTIVE ORDER

PHASE 2

Effective when 50% of the population 16+ has received their first dose of the vaccine.

- Facial covering mandate for outdoors lifted for all individuals.
- Physical distancing of at least 3 feet between groups is encouraged.
- Facial coverings still required for indoors, except when eating or drinking.



FACE COVERING EXECUTIVE ORDER

PHASE 3

Effective when 70% of the population 16 or older has received their first dose of the vaccine and/or Orange County's 14-day rolling positivity rate is 5% or below.

- All mandates lifted.

