

Watermark Neighborhood Park

Community Meeting

Orange County Parks & Recreation Division



January 12, 2022



Community Meeting Agenda

- **Introductions**
- **Site Overview**
- **Recreation Amenities**
- **Park Timeline**
- **Next Steps**
- **Questions & Comments**



Community Meeting Agenda

- **Introductions**
- Site Overview
- Recreation Amenities
- Park Timeline
- Next Steps
- Questions & Comments

Matt Suedmeyer

Manager, Orange County Parks and Recreation

Grant Wenrick

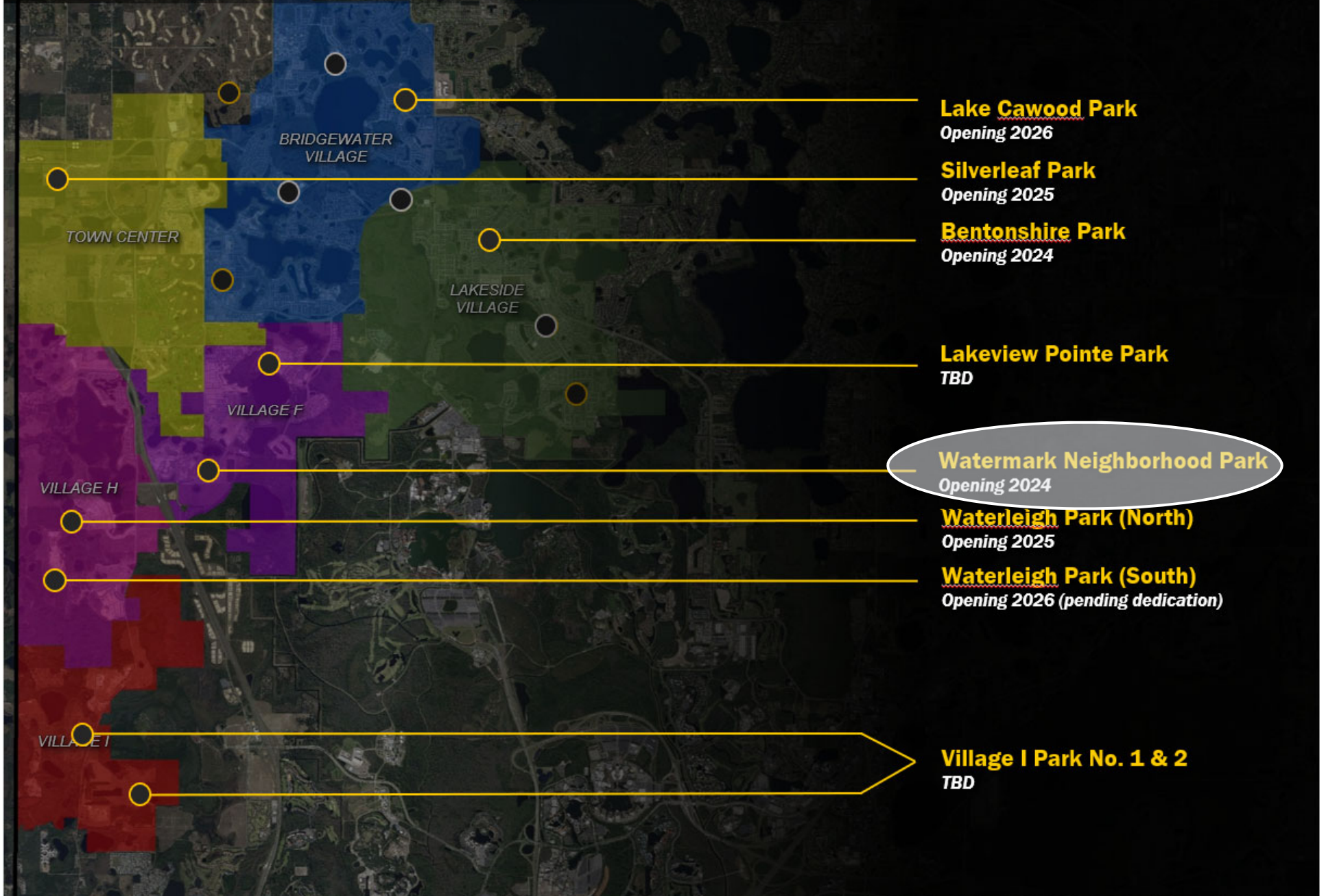
Landscape Architect, Orange County Parks and Recreation



Community Meeting Agenda

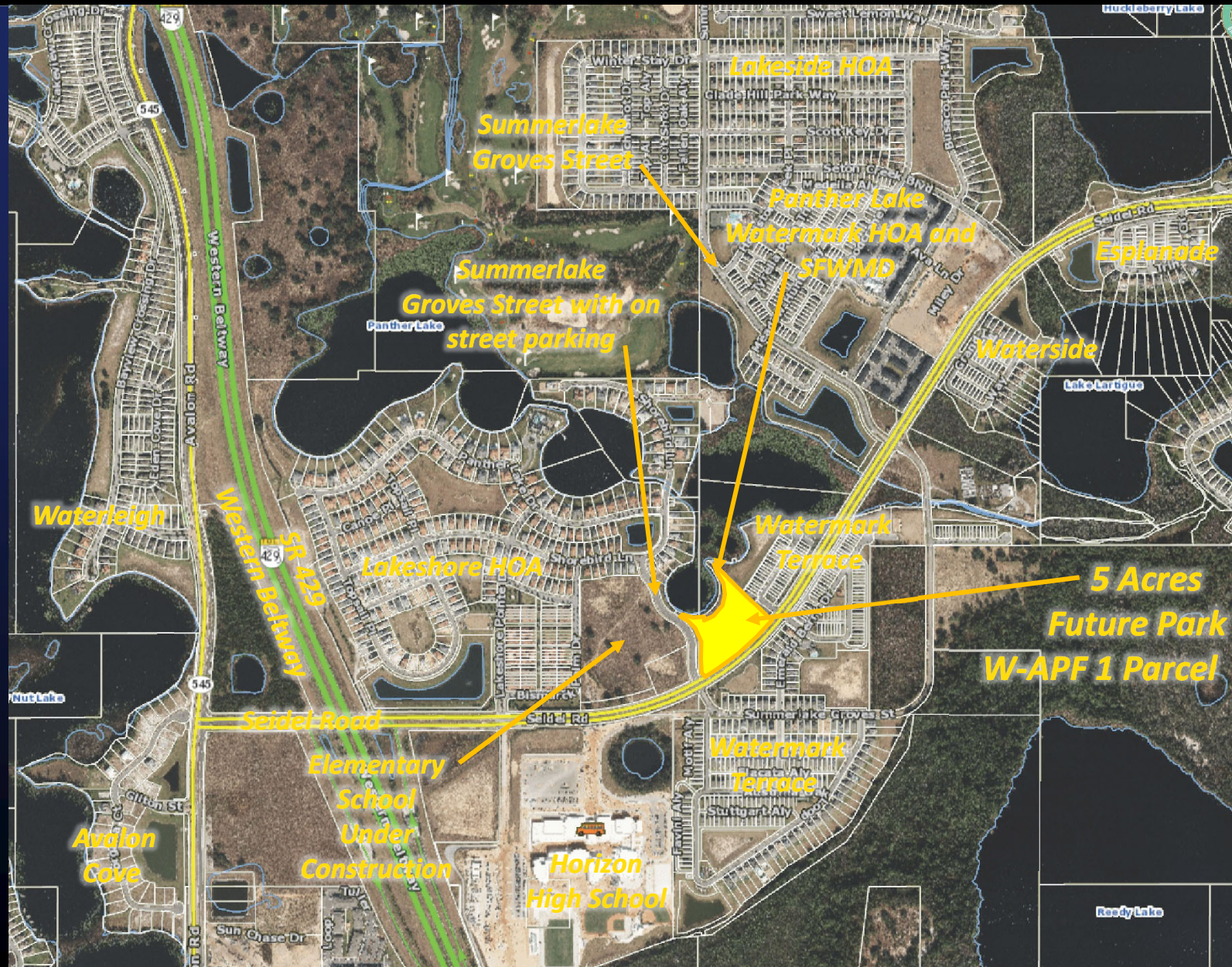
- Introductions
- **Site Overview**
- Recreation Amenities
- Park Timeline
- Next Steps
- Questions & Comments

Planned Parks





Site Overview – Area Map





Site Overview – Site Close Up





Site Overview – Site Pictures



Looking south towards Seidel Road



Potential views towards Panther Lake



Wide open, modest sloping site towards lake



Looking north into park site towards lake



Recreation Amenities – Park Types

Orange County Parks and Recreation Master Plan:

- Pocket Park – 2 acres or less
- **Neighborhood Park – 2-19 acres (typically 5 acres)**
- Community Park – 20-149 acres (typically 50 acres)
- District Park – 150-500 acres
- Regional Park – 500 acres or more
- Specialty Park – Designed for one activity (i.e. Senior Center)



Community Meeting Agenda

- Introductions
- Site Overview
- **Recreation Amenities**
- Park Timeline
- Next Steps
- Questions & Comments

Potential Park Amenities



Potential Park Amenities



Picnic Pavilion

Potential Park Amenities



Shade Trees

Potential Park Amenities



Shade Trees

Potential Park Amenities



Large Open field

Potential Park Amenities



Fitness Equipment

Potential Park Amenities



Dog Park

Potential Park Amenities



Potential Park Amenities



Potential Park Amenities



Skateboarding

Incompatible Park Amenities



Splash Pads

Incompatible Park Amenities



Gym/Recreation Center

Incompatible Park Amenities



Athletic Fields & Courts

Incompatible Park Amenities



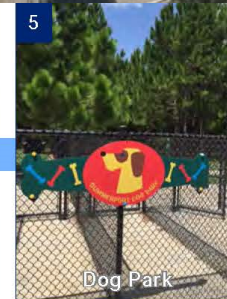
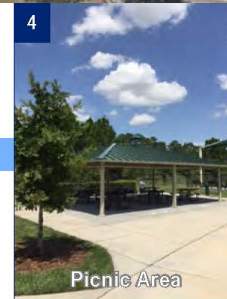
Swimming Pool

Independence Park

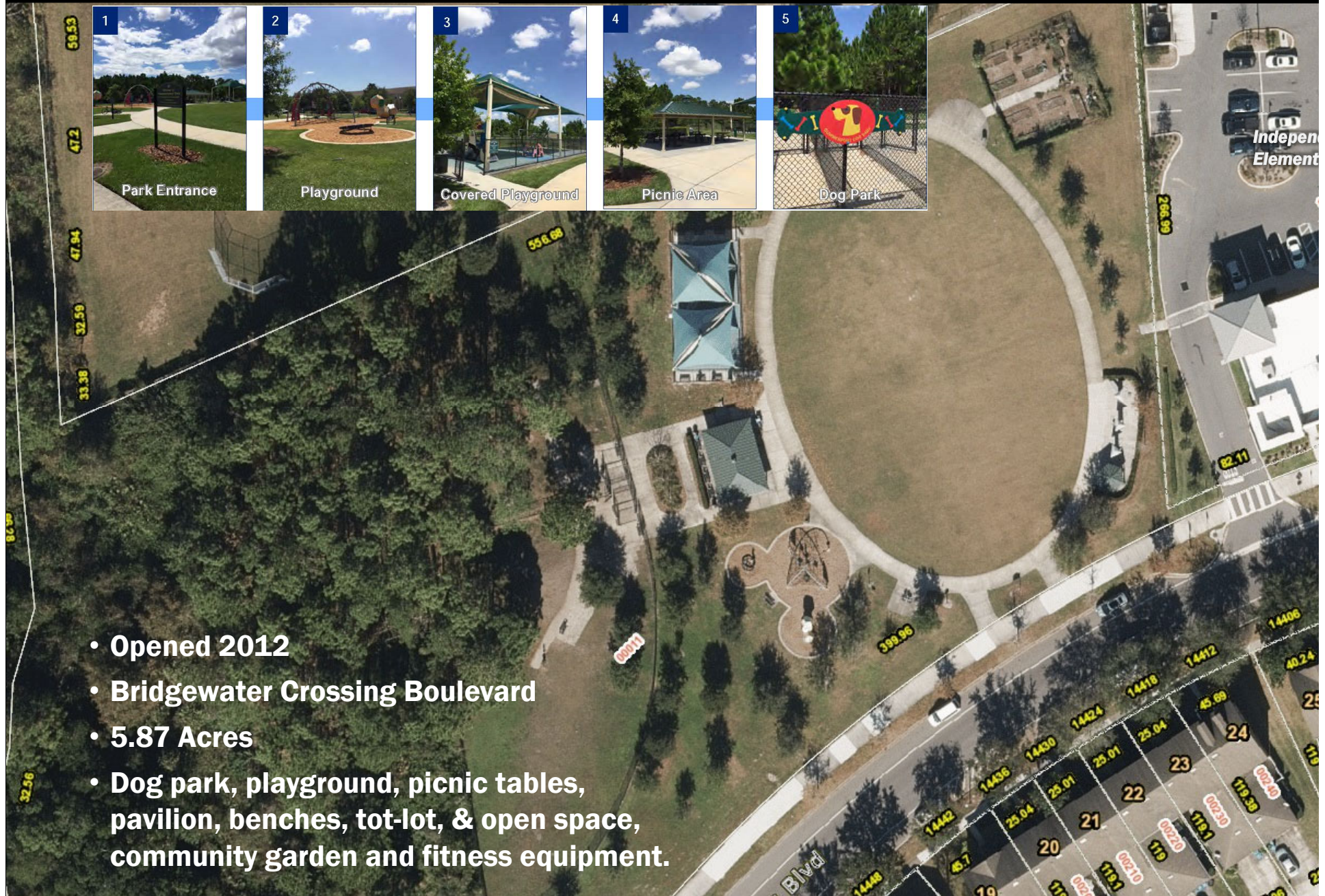


- Opened 2015
- 5 Acres
- Dog park, playground, picnic tables, pavilion, benches, tot-lot, & open space

Summerport Park



- Opened 2012
- Bridgewater Crossing Boulevard
- 5.87 Acres
- Dog park, playground, picnic tables, pavilion, benches, tot-lot, & open space, community garden and fitness equipment.



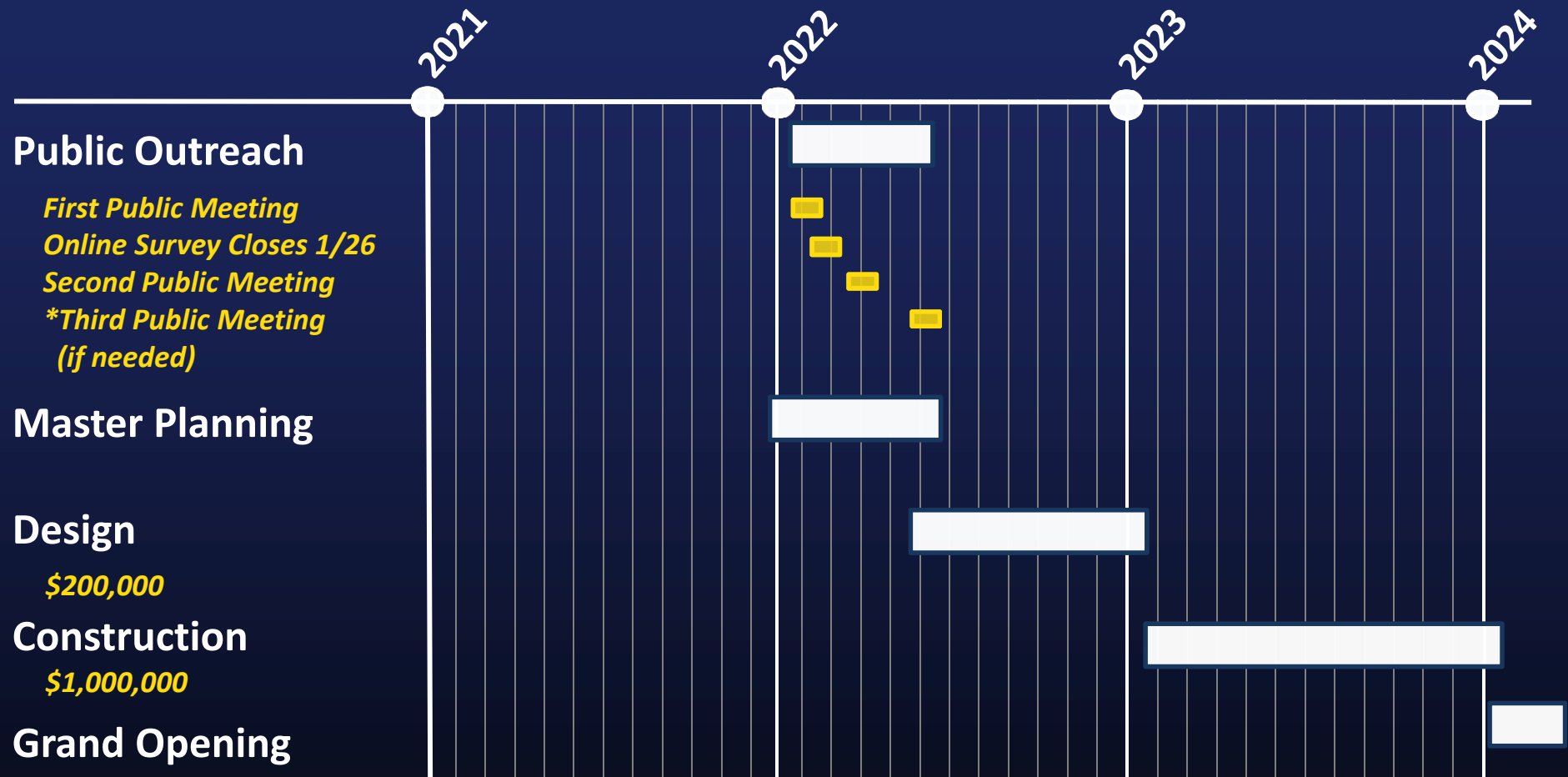


Community Meeting Agenda

- Introductions
- Site Overview
- Recreation Amenities
- **Park Timeline**
- Next Steps
- Questions & Comments



Planning & Development Timeline





Community Meeting Agenda

- Introductions
- Site Overview
- Recreation Amenities
- Park Timeline
- **Next Steps**
- Questions & Comments



Park Amenities Survey

www.surveymonkey.com/r/WatermarkPark



Watermark Park Amenities Survey

1. Where do you live?

Street Address:

City:

Zip Code:

2. Please select the amenities listed below that you would like to see in the new park (amenities such as swimming pools, splash playgrounds, and recreation centers are not possible in neighborhood parks due to size of the property):

- ☐ Fitness area/exercise stations
- ☐ Paved walking path/sidewalk
- ☐ Tot-lot (ages 2-5)
- ☐ Playground (ages 5-12)
- ☐ Picnic Pavilion
- ☐ Community Garden
- ☐ Dog Park
- ☐ Volleyball
- ☐ Mini-skate Park
- ☐ Multi-purpose field/open space
- ☐ Other (please specify)

Survey closes January 26, 2022

Next Meeting: March 30, 2022 @ 6pm

Community Meeting
Orange County Parks & Recreation Division

January 12, 2022



Community Meeting Agenda

- Introductions
- Site Overview
- Recreation Amenities
- Park Timeline
- Next Steps
- **Questions & Comments**



Questions?

